



External Fabrics
Collection

SCREENS

FRONT

BACK



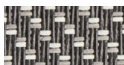
Serge 600 - 008008
linen/linen



Serge 600 - 002007
white/pearl grey



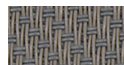
Serge 600 - 001002
grey/white



Serge 600 - 001061
grey/white-pearl grey



Serge 600 - 033032
soft clay



Serge 600 - 033001
oyster shell

FRONT

BACK



Serge 600 - 007007
pearl grey/pearl grey



Serge 600 - 001001
grey/grey



Serge 600 - 001010
grey/charcoal



Serge 600 - 010011
charcoal/bronze



Serge 600 - 010010
charcoal/charcoal



Serge 600 - 030030
pure black



Serge 600

References	Colours		As = Solar absorbance %	Rs = Solar Reflectance %	Ts = Solar Transmittance %	Tv = Visible Light Transmittance %	Tuv = UV Transmittance %
Serge 600 - 008008	linen/linen	front	32.5	52.5	14.9	12.9	5.8
		back	32.4	52.7	14.9	12.9	5.8
Serge 600 - 002007	white/pearl grey	front	40.9	47.6	11.5	10.7	6
		back	33.2	55.3	11.5	10.7	6
Serge 600 - 001002	grey/white	front	56.2	37.2	6.7	6.6	5.5
		back	66.4	26.9	6.7	6.6	5.5
Serge 600 - 001061	grey/white-pearl grey	front	63	33.2	3.9	3.6	3
		back	70.9	25.2	3.9	3.6	3
Serge 600 - 007007	pearl grey/pearl grey	front	51.7	38.3	10.1	8.4	6
		back	50.5	39.4	10.1	8.4	6
Serge 600 - 001001	grey/grey	front	81.3	15.1	3.5	3.6	3.5
		back	81.4	15.1	3.5	3.6	3.5
Serge 600 - 001010	grey/charcoal	front	86.5	9.9	3.6	3.6	3.4
		back	83.8	12.6	3.6	3.6	3.4
Serge 600 - 010010	charcoal/charcoal	front	91.4	5	3.6	3.6	3.6
		back	91.6	4.8	3.6	3.6	3.6
Serge 600 - 033032	soft clay	front	67.5	24.7	7.8	7.3	7.0
		back	69.7	22.5	7.8	7.3	7.0
Serge 600 - 033001	oyster shell	front	74.7	17	8.3	8	7.9
		back	73.3	18.4	8.3	8	7.9
Serge 600 - 010011	charcoal/bronze	front	87.4	6.5	6.1	6.1	6.2
		back	87.9	6	6.1	6.1	6.2
Serge 600 - 030030	pure black	front	90.4	3.7	5.9	5.9	5.9
		back	90.4	3.7	5.9	5.9	5.9

As+Rs+Ts= 100% of incident energy

Technical Properties	Standard		Result
Composition	Fibreglass 42% - PVC 58%		
Weight	NF EN 12127		535.00g/m ²
Thickness	ISO 5084		0.74 mm
Openess factor	NBN EN 410		5%
Tear strength (original)	ISO 4674-1 method 2		warp: 8,5 daN weft: 7,5 daN
Breaking strength (original)	ISO 1421		warp: 180 daN/5cm weft: 185 daN/5cm
Fire classification	Europe	UNE-EN 13501-1:2007	C-s3,d0
	France	NF P92-503	M1
	Italy	UNI 9177	Class 1
	Germany	DIN 4102	B1
	UK	BS 5867	C
	USA	NFPA 701	FR





Soltis 86-2046
alu/oat



Soltis 86-2171
boulder



Soltis 86-2048
alu/alu



Soltis 86-2167
concrete



Soltis 86-2047
anthracite

References	Colours		As = Solar absorbance %	Rs = Solar Reflectance %	Ts = Solar Transmittance %	Tv n-h % = Normal- hemispherical visible light transmission	Tv n-n % = Normal-normal visible light transmission
Soltis 86-2046*	alu/oat	A	36	43	21	20	14
		B	23	58	19	19	14
Soltis 86-2171	boulder		42	39	19	17	14
Soltis 86-2048	alu/alu		36	42	22	22	16
Soltis 86-2167	concrete		68	17	15	14	13
Soltis 86-2047	anthracite		77	7	16	16	15

A: Aluminium face exposed to the sun

B: Coloured face exposed to the sun

*different colours on two sides

As+Rs+Ts= 100% of incident energy



Technical Properties	Soltis 86	Standards
Weight	380 g/sqm	EN ISO 2286-2
Thickness	0,43 mm	
Roll-width	177 cm	
New roll-width	267 cm	
Tensile strength (warp/weft)	230/160 daN / 5 cm	EN ISO 1421
Tear resistance (warp/weft)	45/20 daN	DIN 53.363
Flame retardancy (warp/weft)	M1/NFP 92-507 • METHOD 1/NFPA 701 • CSFM T19 • CLASS A/ASTM E84 B1/DIN 4102-1 • BS 7837 • BS 5867 • SCHWERBRENNBAR-Q1-TR1/ONORM A 3800-1 • CLASSE 1/UNI 9177-87 • M1/UNE 23.727-90 • VKF 5.2/SN 198898 1530.3 /AS/NZS 1530.3 • G1/GOST 30244-94	
Euroclass	B-s2,d0/EN 13501-1	
Quality management system	ISO 9001	

The technical data shown here are average values, given for information only, and may be modified.



Tear resistance



Won't sag



Flame retardant



100% recyclable textile



Visibility toward the outside



Space-saving



Long life



Easy maintenance

Soltis 86





Soltis 92-2046
alu/oat



Soltis 92-2171
boulder



Soltis 92-2048
alu/alu



Soltis 92-2045
beaten-metal



Soltis 92-2074
alu-medium grey



Soltis 92-2167
concrete



Soltis 92-2047
anthracite



Soltis 92-51176
deep black



Soltis 92-2043
bronze

References	Colours		As = Solar absorptance %	Rs = Solar Reflectance %	Ts = Solar Transmittance %	Tv n-h % = Normal- hemispherical visible light transmission	Tv n-n % = Normal-normal visible light transmission
Soltis 92-2046*	alu/oat	A	43	48	9	8	3
		B	28	63	9	8	3
Soltis 92-2171	boulder		49	43	8	6	4
Soltis 92-2048	alu/alu		46	46	8	8	3
Soltis 92-2045	beaten-metal		62	35	3	3	3
Soltis 92-2074*	alu-medium grey	A	58	38	4	4	3
		B	71	25	4	4	3
Soltis 92-2167	concrete		78	19	3	3	3
Soltis 92-2047	anthracite		87	8	5	5	4
Soltis 92-51176	deep black		91	6	3	3	3
Soltis 92-2043	bronze		86	12	2	2	2

A: Aluminium face exposed to the sun

B: Coloured face exposed to the sun

*different colours on two sides

As+Rs+Ts= 100% of incident energy



Technical Properties	Soltis 92	Standards
Weight	420 g/sqm	EN ISO 2286-2
Thickness	0,45 mm	
Roll-width	177 cm	
Tensile strength (warp/weft)	310/210 daN / 5 cm	EN ISO 1421
Tear resistance (warp/weft)	40/20 daN	DIN 53.363
Flame retardancy (warp/weft)	M1/NFP 92-507 • METHOD 1/NFPA 701 • CSFM T19 • CLASS A/ASTM E84 B1/DIN 4102-1 • BS 7837 • BS 5867 • LASSE 1/UNI 9177-87 • M1/UNE 23.727-90 VKF 5.2/SN 198898 • 1530.3/AS/NZS 1530.3 • G1/GOST 30244-94	
Euroclass	B-s2,d0/EN 13501-1	
Quality management system		ISO 9001

The technical data shown here are average values, given for information only, and may be modified.



Visual comfort



Easy maintenance



Thermal comfort



Space-saving



Won't sag



Visibility toward the outside



100% recyclable textile



Tear resistance



Long life



Flame retardant



Soltis B92-1044
white



Soltis B92-1045
beaten metal



Soltis B92-2135
sandy beige



Soltis B92-2171
boulder



Soltis B92-1046
alu

Orders with Soltis B92 might require longer production time.
Please contact your sales representative for availability information.

B92 - total black out (opaque to 100 000 Lux)



References	Colours	As = Solar absorptance %	Rs = Solar Reflectance %
Soltis B92-1044	white	28	72
Soltis B92-2135	sandy beige	53	47
Soltis B92-1046	alu	51	49
Soltis B92-1045	beaten metal	65	35
Soltis B92-2171	boulder	55	45

*different colours on two sides
 $As + Rs = 100\%$ of incident energy



Technical Properties		Soltis B92
Weight		650 g/sqm
Thickness		0,60 mm
Physical properties		
Tensile strength (warp/weft)		330/220 daN / 5 cm
Tear resistance (warp/weft)		45/25 daN
Flame retardancy (warp/weft)		B1/DIN 4102-1 Shwerbrennbar - Q1-Tr1 / ONORMA 3800-1 Class 2 / UNI 9177-87 VKF 5.2 / SN 198898 BS 5867 Method 1 and 2 / NFPA 701
Euroclass		B-s2, d0

The technical data shown here are average values, given for information only, and may be modified.

FRONT

BACK



Serge 1% - 007007
pearl grey/pearl grey

FRONT

BACK



Serge 1% - 010010
charcoal/charcoal



Serge 1% - 001001
grey/grey



Serge 1% - 001010
grey/charcoal

Orders with Serge 1% might require longer production time.
Please contact your sales representative for availability information.



Serge 1%

References	Colours		As = Solar absorptance %	Rs = Solar Reflectance %	Ts Transmittance %
Serge 1% -007007	pearl grey/pearl grey	front	60,3	36,9	2,8
		back	60,3	36,9	2,8
Serge 1% -001001	grey/grey	front	80	17,4	2,4
		back	80	17,4	2,4
Serge 1% -010010	charcoal/charcoal	front	93	5,9	1,1
		back	93	5,9	1,1
Serge 1% -001010	grey/charcoal	front	88,3	10,5	1,2
		back	84,8	14	1,2

Technical Properties	Standard		Result
Composition	Fibreglass 42% - PVC 58%		
Weight	NF EN 12127		638.00g/m ²
Thickness	ISO 2286-3		0.78 mm
Openess factor	NBN EN 410		1%
Tear strength (original)	ISO 4674-1 method 2		warp: 5,9 daN weft: 6,2 daN
Breaking strength (original)	ISO 1421		warp: 321 daN/5cm weft: 277 daN/5cm
Fire classification	Europe	UNE-EN 13501-1:2007	C-s3,d0
	France	NF P92-503	M1
	Italy	UNI 9177	Class 1
	Germany	DIN 4102	B1
	UK	BS 5867	C
	USA	NFPA 701	FR



FRONT

BACK



Serge 600 BO Lunar - 007007
pearl grey/pearl grey



Serge 600 BO Lunar - 001001
grey/grey



Serge 600 BO Lunar - 010010
charcoal/charcoal



Serge 600 BO Lunar - 001010
grey/charcoal

Orders with Serge 600 BO Lunar might require longer production time.
Please contact your sales representative for availability information.



References	Colours		As = Solar absorbance %	Rs = Solar Reflectance %	Ts Transmittance %
Serge 600 BO Lunar - 007007	pearl grey/pearl grey	front	64,5	35,5	0,0
		back	66	34	0,0
Serge 600 BO Lunar - 001001	grey/grey	front	82,8	17,2	0,0
		back	66,9	33,1	0,0
Serge 600 BO Lunar - 010010	charcoal/charcoal	front	93,8	6,2	0,0
		back	66,6	33,4	0,0
Serge 600 BO Lunar - 001010	grey/charcoal	front	89	11,0	0,0
		back	66,3	33,7	0,0

Technical Properties	Standard		Result
Composition	Fibreglass 33 % - PVC 47 % - PVC laminate 20 %		
Weight	NF EN 12127		678.00 g/m ²
Thickness	ISO 2286-3		0,73 mm
Openess factor	NBN EN 410		0%
Tear strength (original)	ISO 4674-1 method 2		warp: 8,5 daN weft: 9,0 daN
Breaking strength (original)	ISO 1421		warp: 224,2 daN/5cm weft: 176,6 daN/5cm
Fire classification	Europe	UNE-EN 13501-1:2007	
	France	NF P92-503	M2
	Italy	UNI 9177	Class 1
	Germany	DIN 4102	
	UK	BS 5867	
	USA	NFPA 701	





www.nerligruppen.com

ver 2.2